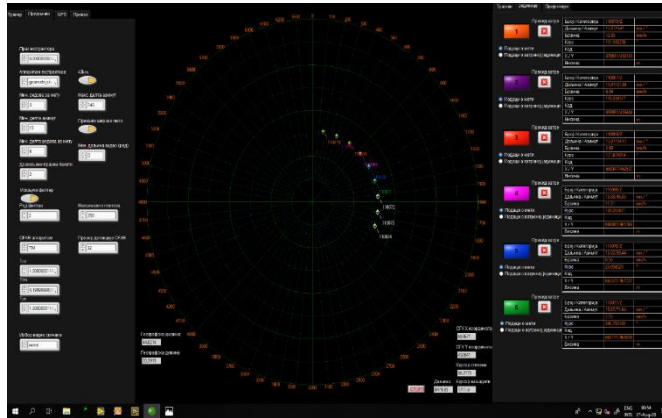




MODERNIZED RADAR "GIRAFFE"



Modernized radar GIRAFFE is an impulse Doppler radar designed for detection and automatic tracking of low flying targets and to provide target data towards PASARS fire units using digital radio devices. Automatic hydraulic vehicle leveling system and applied modern techniques of digital radar signal processing enable high maneuverability, mobility and short response time.

System consists of an existing radar transmitter, a new two-person control panel with a software radar receiver (SRR), a remote workstation, a telecommunication system, an electric generator and an alternative power supply, integrated on the modernized FAP 2026 vehicle of high maneuverability. The low-noise amplifier, additionally built into the receiving branch of the radar, increases the sensitivity of the receiver by almost 50 dB.

TECHNICAL CHARACTERISTICS:

Maximum distance range:	40 km
Maximum height range:	10 km
Target tracking:	automatic tracking of up to 20 targets
Target data transfer:	simultaneously at 6 fire units
Data update period:	1 s
Manipulation:	graphic user interface (GUI)
CFAR algorithms:	CA, OS, TM, CATM, fusion CFAR
Generator power:	50 KW
Vehicle leveling:	automatic
Radar system weight:	22 000 kg
Number of crew:	2

